



*oms*Hypodrive

elevator machine

AZHP1 / AZHP2
AZHP3

technical data
applications

issued: September 2005

omsHypodrive elevator machine



The principle

The hypoid bevel gear drive, familiar from differentials in automobiles, has high load capacity, arc-shaped teeth.

The rolling and lateral sliding motion of the meshing tooth flanks form an ideal hydrodynamic lubricant film.

oms Antriebstechnik has developed this principle into a new gear concept for escalators and elevators.

The advantages of **oms** Hypoid gears:

- high transmission efficiency
- low noise operation resulting from special toothing geometry and use of state-of-the-art grinding technology.
- low electrical input power due to high efficiency
- no retaining by friction
- less maintenance
- hardened, fatigue strength low-wear toothing
- extremely long oil change intervals (life time lubricated under standard operations)
- less backlash
- high quality components: motor, brake, encoder and traction sheave from qualified producers
- quick and unproblematic supply of spare parts



omsHypodrive AZHP3



omsHypodrive AZHP2

omsHypodrive elevator machine



The principle / scope of supply

- simple handling by less weight
- two-part, maintenance friendly traction sheave
- minimum space requirement, small standing surface
- assembling positions:
motor vertical or horizontal
- motor without fan can be delivered on option base for elevators without machine room
- brake system prepared for wire operation on option base
- separate electrically control for each coil is available on option base
- **omsHypodrive** is the elevator machine for new sales and modernization



omsHypodrive AZHP1

scope of supply of an elevator machine

Consisting of:

- Two stage hypoid bevel gear with grinded input stage for AZHP3 and AZHP2
- one stage hypoid gear with grinded input stage with **SYNTEC™** Toothing for AZHP1
- 3 phase induction motor for frequency controlled elevators only
- brake system according to EN 81
- encoder 1024 Imp./revolution. With cable und plug
- two-part traction sheave
- hand wheel
- guide against rope rebounding
- completely mounted and filled with oil
- colour: RAL 5010, blue
option: RAL 7031, grey

traction sheave clamp on option base.

Further information about our products: www.oms-antrieb.de

omsHypodrive elevator machine



Technical data

Gear

series		omsHypodrive AZHP3 (Standard)					omsHypodrive AZHP3 (Option)			
gear type		-18	-18HD	-37	-37HD	-37HD+	-13	13 HD	-24	24 HD
ratio		18,99	18,99	36,85	36,85	36,85	13,57	13,57	24,61	24,61
max. static load	kN	37	53	40	53	65	37	50	37	53
max. traction sheave torque	Nm	2800	2800	3700	3700	5500	2000		3700	
max. motor revolution	min ⁻¹	2500								
efficiency	%	> 96								
typical backlash range	arc. min	4 to 8								
noise pressure level L _{pA} (1500 min ⁻¹)*	dB(A)	62								

* nominal load

Special gear version AZHP3: with overhead, horizontal traction sheave (details on request).

series		omsHypodrive AZHP2				omsHypodrive AZHP1	
gear type		-18	-24	-28	-37	-15	
ratio		18,99	24,68	28,43	36,94	14,67	
max. static load	kN	42	42	42	42	35	
max. traction sheave torque	Nm	1700	1700	2000	2500	930	
max. motor revolution	min ⁻¹	2500				1800	
efficiency	%	> 96				> 92	
typical backlash range	arc. min	4 to 8				5 to 15	
noise pressure level L _{pA} (1500 min ⁻¹)*	dB(A)	59				59	

* nominal load

The different ratios, static loads and traction sheave torques have no influence on dimensions and fastening points. The gear housing of the different gear types of one series are identically.

Please take notice of the operating – and maintenance manual.

omsHypodrive elevator machine



Technical data

Standard motor

series		omsHypodrive AZHP3	omsHypodrive AZHP2 / AZHP1
motor		three phase induction motor, 4 poles	
oms Type / power	kW	type 9 / 4 with 7,5kW - 40Hz / 11kW - 60Hz	type 1 with 4,2kW - 60Hz
240 F/h / 60 % ED	kW	type 5 with 15kW - 70Hz	type 7 / 2 with 3,8kW - 40Hz/ 5,5kW - 60Hz
	kW	type 11 / 6 with 17kW - 60Hz / 20kW - 70Hz	type 10 with 7,5kW - 60Hz
	kW	type 30 with 13 kW - 50 Hz	
	kW	type 20 / 21 with 14,5kW - 40Hz / 20,5kW - 60Hz	type 24 with 9.0kW - 60Hz
180 F/h / 40 % ED	kW	type 19 / 14 with 7,5kW - 40Hz / 11kW - 60Hz	type 22 with 5.5kW - 50Hz / fan less
			type 23 with 7.5kW - 50Hz / fan less
version / frame size		IM B5 / 132 + 160	IM B5 / 112 + 132
temperature sensor			PTC
rated voltage	V		400

Brake system

Series		omsHypodrive AZHP3	omsHypodrive AZHP2 / AZHP1
construction		Double-circuit shoe brake	Double-circuit disk brake
supply voltage	V	1 x 230 AC	1 x 230 AC
brake torque	Nm	oms Type 1 2 x 84	oms Type 10 2 x 50
rated current/ current over excited	A	0,54 / 1,1	
brake torque	Nm	oms Type 2 2 x 108	0,48
rated current/ current over excited	A	0,65/1,3	
brake wear - /brake lift control		option / standard	self monitoring / standard
Attention: for machine room less elevators (in case of no local brake access)			
brake for separated electrically operation	option	2 x 230 AC	2 x 207 DC brake system w/o brake lever
rated current/ current over excited	A	2 x 50 % referred to s.a. type	2 x 0,24 / -
brake prepared for separated mechanically remote operation	Option	suitable for Bowden - or rope operation	
		1 x 230 AC	1 x 230 AC
rated current/ current over excited	A	see Type 1 or 2	0,48 / -
brake wear - /brake lift control		option / standard	self monitoring / standard

Encoder

series		omsHypodrive AZHP3/AZHP2/AZHP1
Type		hollow shaft - encoder
impulse per revolution	1/revol.	1024
Signal		Sinuous: 1 Vpp / TTL / HTL
encoder cable length	m	5
plug for encoder connection	standard	Sub-D plug, 2 - rows, 15 poles
adapter	option	adapter: Sub-D, 15 pol. from 2 rows to 3 rows
extension cable for encoder	option	5 meter for Sub-D, 15 poles, 2 rows

OMS Hypodrive elevator machine

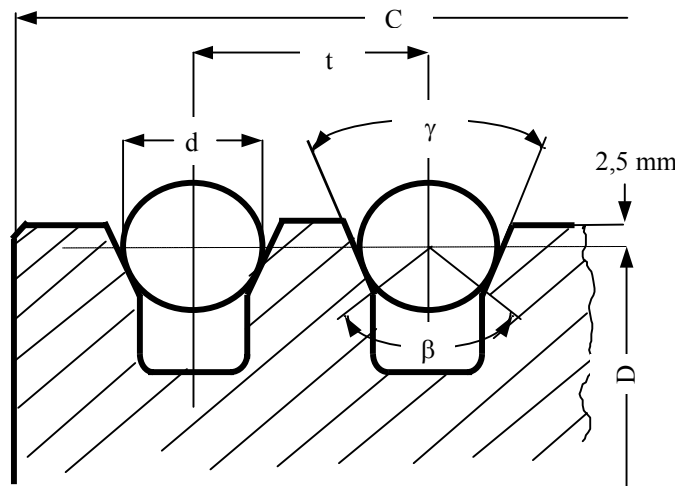


Technical data

Traction sheave

Two-part traction sheave with flange mounting, material : GG 25 (ca. 230 HB)
 option: hardened grooves 50 HRC
 traction sheave clamp on option
 V – grooves with undercut

type	traction sheave D mm	grooves		dimensions			weight kg	
		z	d mm	C mm	t mm	β °		γ °
standard traction sheaves								
K401	400	5	10	112	17	94	40	37
K406	450	6	10	112	17	94	40	46
K510	500	6	10	112	17	102	40	52
K503	560	6	10	112	17	94	40	59
K508	560	6	11	112	17	97	40	59
K602	650	6	10	112	17	97	40	86
K606	650	6	11	112	17	97	40	86
traction sheave on option base								
	320	6 - 10	8	125	12 - 17	80 - 104	35 - 45	34
	400	6	8 - 10	112	17	80 - 104	35 - 45	37
	450	6	8 - 11	112	17	80 - 104	35 - 45	46
	500	6	8 - 11	112	17	80 - 104	35 - 45	52
	560	6	8 - 11	112	17	80 - 104	35 - 45	59
	650	6	8 - 11	112	17	80 - 104	35 - 45	86
	650	6 - 7	8 - 14	130	17 - 20	80 - 104	35 - 45	96
	560	6 - 7	8 - 14	130	17 - 20	80 - 104	35 - 45	65
special traction sheave								
	420 - 950	3 - 8	8 - 14	90 - 140	variable	80 - 104	35 - 45	-



omsHypodrive elevator machine



Application examples

Suspension 1:1

v m/s	load [kg]							
	450	630	800	1000	1000	1250	1600	
0,63 -1	800 AZHP1-15 320 Type 22 / 5,5 8,4 / 14 212 / 0,0326	900 AZHP1-15 320 Type 28 / 5 10 / 15 231 / 0,0366	1200 AZHP2-18 320 Type 23 / 7,5 14,5 / 21 273 / 0,0366	1200 AZHP2-24 320 Type 23 / 7,5 14,5 / 26 273 / 0,0366	1400 AZHP3-24HD 420 Type 9 / 7,5 15 / 25 376 / 0,0753	1400 AZHP3-24HD 420 Type 30 / 13 26 / 37 445 / 0,134	1600 AZHP3-37HD+ 450 Type 5 / 15 28 / 44 416 / 0,122	car weight type of gear sheave diameter oms type / power rated- / starting current weight / flywheel
	800 AZHP2-37 500 Type 1 / 4,2 8,4/15 248 / 0,0243	1000 AZHP2-37 500 Type 7 / 3,8 8 / 13 253 / 0,0256	1200 AZHP2-37 500 Type 22 / 5,5 11 / 19 272 / 0,0326	1200 AZHP2-37 500 Type 23 / 7,5 10 / 15 291 / 0,0366	1600 AZHP3-37HD 560 Type 9 / 7,5 16 / 24 376 / 0,0753	1600 AZHP3-37HD+ 560 Type 12 / 12 22 / 27 445 / 0,141	1800 AZHP3-37HD+ 560 Type 12 / 12 22 / 31 445 / 0,141	car weight type of gear sheave diameter oms type / power rated- / starting current weight / flywheel
	800 AZHP2-37 500 Type 1 / 4,2 8,4 / 15 248 / 0,0243	1000 AZHP2-37 500 Type 22 / 5,5 11 / 18 272 / 0,0326	1200 AZHP2-37 500 Type 22 / 5,5 11 / 19 272 / 0,0326	1200 AZHP2-37 500 Type 23 / 7,5 14,5 / 22 291 / 0,0366	1600 AZHP3-37HD 560 Type 4 / 11 22 / 33 376 / 0,0753	1600 AZHP3-37HD+ 560 Type 5 / 15 28 / 47 416 / 0,122	1800 AZHP3-37HD+ 560 Type 11 / 17 31 / 47 445 / 0,141	car weight type of gear sheave diameter oms type / power rated- / starting current weight / flywheel
	800 AZHP2-37 560 Type 2 / 5,5 11 / 17 260 / 0,0256	1000 AZHP2-37 560 Type 10 / 7,5 14,5 / 22 271 / 0,0378	1200 AZHP2-37 560 Type 10 / 7,5 14,5 / 26 271 / 0,0378		1600 AZHP3-37HD 560 Type 5 / 15 28 / 42 416 / 0,122	1600 AZHP3-24HD 560 Type 12 / 12 26,5 / 38 445 / 0,141	1800 AZHP3-37HD+ 650 Type 21 / 20,5 37 / 56 488 / 0,156	car weight type of gear sheave diameter oms type / power rated- / starting current weight / flywheel
	800 AZHP2-24 560 Type 10 / 7,5 14,5 / 24 271 / 0,049	1000 AZHP3-24 560 Type 4 / 11 22 / 34 376 / 0,0753	1200 AZHP3-24 560 Type 5 / 15 28 / 48 416 / 0,122		1600 AZHP3-24HD 560 Type 11 / 17 31 / 48 445 / 0,141	1600 AZHP3-24HD 560 Type 11 / 17 37 / 56 445 / 0,141	1800 AZHP3-37HD+ 650 Type 21 / 20,5 37 / 56 488 / 0,156	car weight type of gear sheave diameter oms type / power rated- / starting current weight / flywheel
2	800 AZHP2-24 560 Type 10 / 7,5 15 / 24 260 / 0,0378	1200 AZHP3-24 560 Type 4 / 11 22 / 45 376 / 0,0753	1200 AZHP3-24 560 Type 5 / 15 28 / 48 416 / 0,122		1600 AZHP3-24HD 560 Type 11 / 17 31 / 48 445 / 0,141	1600 AZHP3-24HD 560 Type 11 / 17 37 / 56 445 / 0,141	on request	car weight type of gear sheave diameter oms type / power rated- / starting current weight / flywheel

remarks:

shaft efficiency 0,78
loads counterweighted at 50 %
car weight [kg]
traction sheave diameter [mm]

power [kW]
rated/-starting current [A]
weight of machine [kg]
flywheel referred to motor shaft [kgm²]

omsHypodrive elevator machine



Application examples

Suspension 2:1

v m/s	load [kg]							
	450	630	800	1000	1600	2000	3000	
0,5	900	1000	1300	1600	1800	2400	3000	car weight
	AZHP1-15	AZHP1-15	AZHP1-15	AZHP1-15	AZHP2-37	AZHP2-37	AZHP3-37HD+	type of gear
	320	320	320	320	450	450	650	sheave diameter
	Type 1 / 4,2	Type 7 / 3,8	Type 22 / 5,5	Type 28 / 5	Type 10 / 7,5	Type 24 / 9	Type 12 / 12	oms type / power
8,4 / 15	8 / 13	11 / 18	10 / 14	14,5/23	18/ 29	22 / 35	rated- / starting current	
186 / 0,0243	191 / 0,0256	212 / 0,0326	231 / 0,037	258 / 0,0378	274 / 0,0378	472 / 0,141	weight /flywheel	
0,63	900	1000	1300	1600	1800	2400	3000	car weight
	AZHP1-15	AZHP1-15	AZHP1-15	AZHP1-15	AZHP3-24	AZHP3-37	AZHP3-37HD+	type of gear
	320	320	320	320	450	560	650	sheave diameter
	Type 1 / 4,2	Type 7 / 3,8	Type 22 / 5,5	Type 23 / 7,5	Type 4 / 11	Type 4 / 11	Type 11 / 17	oms type / power
8,4 / 15	8 / 13	11 / 18	14,5 / 21	22 / 33	22 / 32	32 / 52	rated- / starting current	
186 / 0,0243	191 / 0,0256	212 / 0,0326	231 / 0,037	354 / 0,075	376 / 0,075	472 / 0,141	weight /flywheel	
0,8	900	1000	1300	1600	1800	2400	3000	car weight
	AZHP1-15	AZHP1-15	AZHP1-15	AZHP1-15	AZHP3-24	AZHP3-24	AZHP3-37HD+	type of gear
	320	320	320	320	450	560	650	sheave diameter
	Type 1 / 4,2	Type 2 / 5,5	Type 22 / 5,5	Type 23 / 7,5	Type 4 / 11	Type 30 / 13	Type 11 / 17	oms type / power
8,4 / 15	11/ 19	11 / 18	14,5 / 21	22 / 33	26 / 42	32 / 52	rated- / starting current	
186 / 0,0243	193 / 0,0256	212 / 0,0326	231 / 0,037	354 / 0,075	445 / 0,134	472 / 0,141	weight /flywheel	
1	900	1000	1300	1600	1800	2400	on request	car weight
	AZHP1-15	AZHP1-15	AZHP1-15	AZHP2-18	AZHP3-24	AZHP3-24		type of gear
	400	400	400	500	560	560		sheave diameter
	Type 2 / 5,5	Type 22/5,5	Type 23 / 7,5	Type 23 / 7,5	Type 5 / 15	Type 11 / 17		oms type / power
11 / 17	11/ 19	14,5 / 21	14,5 / 24	28 / 46	31 / 47		rated- / starting current	
196 / 0,0256	224 / 0,0326	234 / 0,037	291 / 0,037	416 / 0,122	445 / 0,141		weight /flywheel	
1,2	900	1000	1300	1600	1800	2400	on request	car weight
	AZHP1-15	AZHP1-15	AZHP2-18	AZHP3-18	AZHP3-18	AZHP3-24		type of gear
	500	500	560	560	560	650		sheave diameter
	Type 22 / 5,5	Type 23 / 7,5	Type 24 / 9	Type 4 / 11	Type 30 / 13	Type 11 / 17		oms type / power
11 / 19	14,5 / 21	18 / 29	22 / 35	26 / 42	31 / 56		rated- / starting current	
230 / 0,0326	249 / 0,037	287 / 0,0378	376 / 0,0753	445 / 0,134	472 / 0,141		weight /flywheel	
1,6	900	1200	1300	1600	1800	on request	on request	car weight
	AZHP1-15	AZHP2-18	AZHP3-18	AZHP3-18	AZHP3-18			type of gear
	560	650	650	650	650			sheave diameter
	Type 24 / 9	Type 24 / 9	Type 4 / 11	Type 5 / 15	Type 21/ 20,5			oms type / power
18 / 25	18 / 25	22 / 77	28 / 47	37 / 57			rated- / starting current	
245 / 0,0378	314 / 0,0378	403 / 0,075	443 / 0,122	488 / 0,156			weight /flywheel	

remarks:

shaft efficiency 0,76

for further information see page 7

oms Hypodrive elevator machine



Application examples

Modernisation suspension 1: 1 (Optionally available with auxiliary disk brake on traction sheave against cabin fall upwards)

Flexible, compact, quiet

v				load [kg]		
m/s	320	450	450	630	630	
0,63	700	800	800	1200	1200	car weight
	AZHP1-15	AZHP1-15	AZHP2-37	AZHP2-37	AZHP2-37	type of gear
	400	400	560	560	650	sheave diameter
	Type 22 / 5,5	Type 28 / 5	Type 7 / 3,8	Type 22 / 5,5	Type 28 / 5	oms type / power
	11 / 18	10 / 15	8 / 11	11 / 18	10 / 13	rated- / starting current
	215 / 0,0326	230 / 0,0366	260 / 0,0256	279 / 0,0326	325 / 0,0378	weight / flywheel
0,8	700	800	800	1200	1200	car weight
	AZHP1-15	AZHP1-15	AZHP2-37	AZHP2-37	AZHP2-37	type of gear
	400	400	560	560	650	sheave diameter
	Type 22 / 5,5	Type 28 / 5	Type 7 / 3,8	Type 22 / 5,5	Type 28 / 5	oms type / power
	11 / 18	10 / 15	8 / 11	11 / 18	10 / 13	rated- / starting current
	215 / 0,0326	215 / 0,0366	260 / 0,0256	279 / 0,0326	325 / 0,0378	weight / flywheel
1	700	800	800	1200	1200	car weight
	AZHP1-15	AZHP1-15	AZHP2-37	AZHP2-37	AZHP2-37	type of gear
	400	400	560	560	650	sheave diameter
	Type 22 / 5,5	Type 28 / 5	Type 2 / 5,5	Type 22 / 5,5	Type 23 / 7,5	oms type / power
	11 / 18	10 / 15	11 / 16	11 / 18	14,5 / 20	rated- / starting current
	215 / 0,0326	215 / 0,0366	255 / 0,0256	279 / 0,0326	325 / 0,0366	weight / flywheel
1,2	700	800	800	1200	1200	car weight
	AZHP1-15	AZHP2-24	AZHP2-37	AZHP2-28	AZHP2-37	type of gear
	400	400	560	560	650	sheave diameter
	Type 22 / 5,5	Type 22 / 5,5	Type 2 / 5,5	Type 23 / 7,5	Type 23 / 7,5	oms type / power
	11 / 19	11 / 15	11 / 16	14,5 / 23	14,5 / 21	rated- / starting current
	215 / 0,0326	230 / 0,0326	255 / 0,0256	298 / 0,0366	325 / 0,0366	weight / flywheel
1,6	700	800	800	1200	1200	car weight
	AZHP1-15	AZHP2-18	AZHP2-37	AZHP2-28	AZHP2-37	type of gear
	400	400	560	560	650	sheave diameter
	Type 22 / 5,5	Type 22 / 5,5	Type 23 / 7,5	Type 24 / 9	Type 24 / 9	oms type / power
	11 / 19	11 / 19	14,5 / 19	18 / 29	18 / 29	rated- / starting current
	215 / 0,0326	230 / 0,0326	298 / 0,0366	287 / 0,0378	314 / 0,0378	weight / flywheel

remarks:

shaft efficiency 0,8

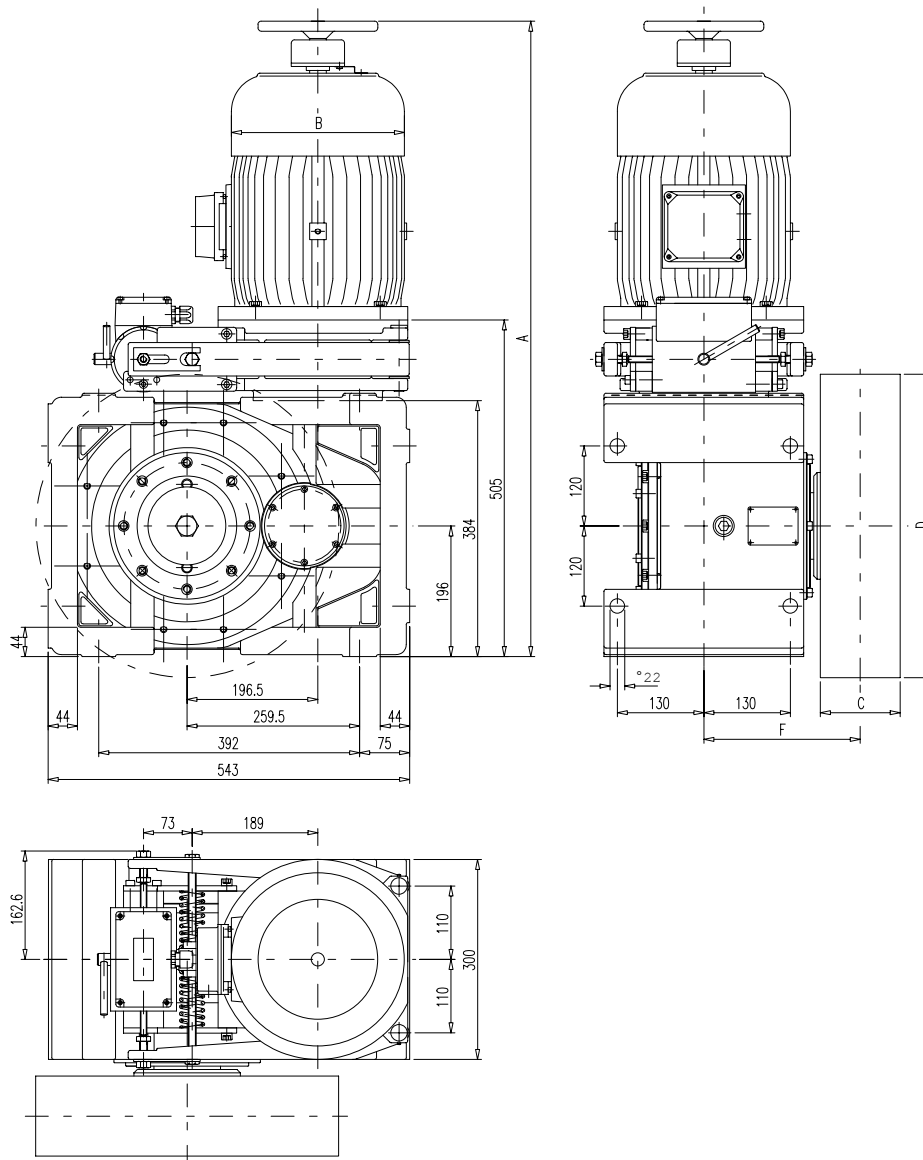
for further information see page 7

OMS Hypodrive elevator machine



Dimension sheet AZHP3 (version A)

motor type oms type	power kW - Hz	measure A mm	measure B mm	ropes	groove distance mm	measure C mm	measure F mm
3	7,5 - 60	1017	260	bis 6 x 11	17	112	235
9 / 4 / 13	7,5 - 40 / 11 - 60 / 15 - 87	1047	260	bis 5 x 11	18	112	235
5	15 - 70	1092	315	bis 4 x 11	20	112	235
12 / 11 / 6	12 - 40 / 17 - 60 / 20 - 70	1136	315	bis 7 x 11	17	130	240
19 / 14	7,5 - 40 / 11 - 60	1017	260	bis 6 x 14	18 - 20	130	240
20 / 21	14,5 - 40 / 20,5 - 60	1164	315	bis 7 x 12	20	140	245
30	13 - 50	1092	315				

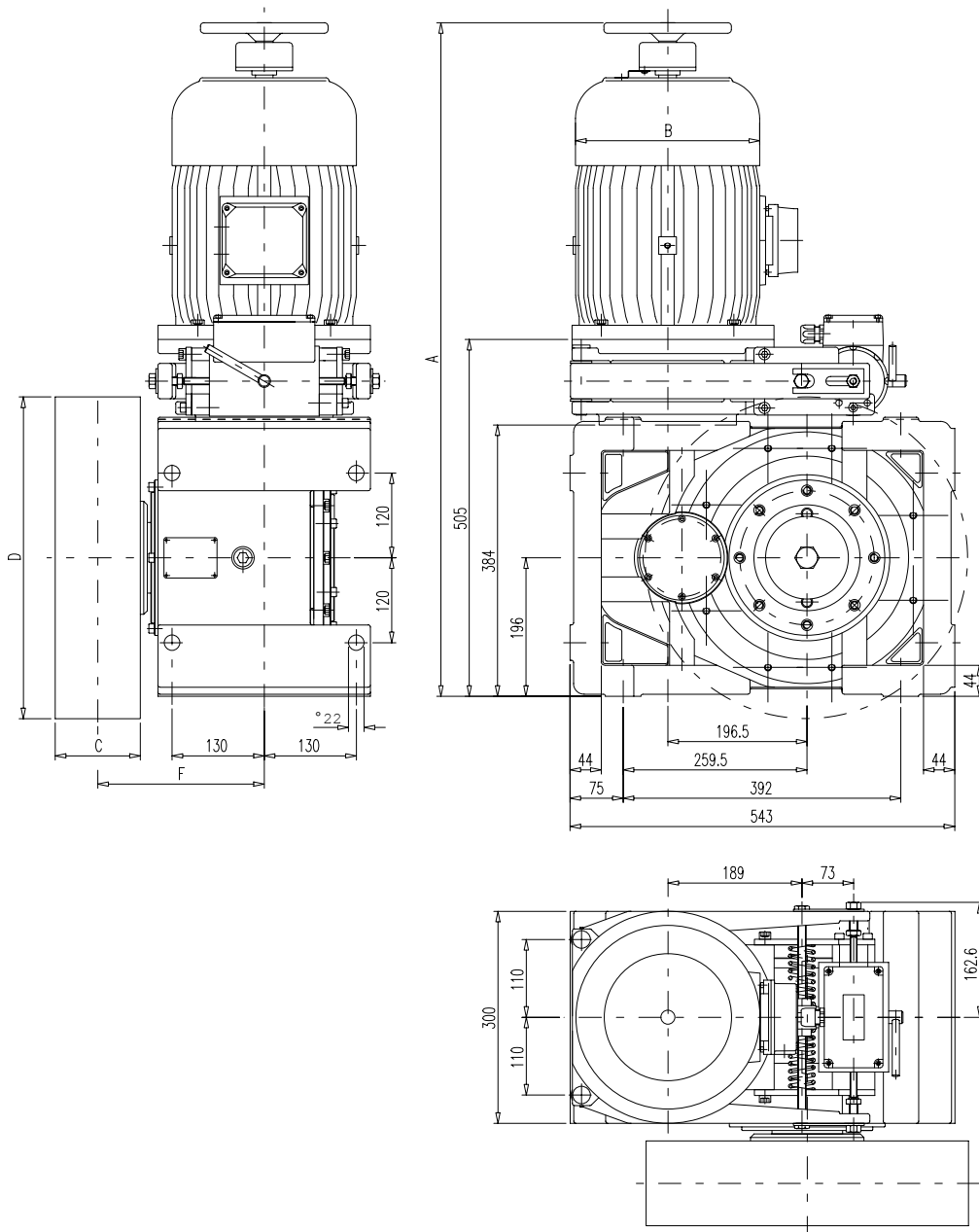


OMS Hypodrive elevator machine



Dimension sheet AZHP3 (version B)

motortype oms type	power kW – Hz	measure A mm	measure B mm	ropes	groove distance mm	measure C mm	measure F mm
3	7,5 – 60	1017	260	bis 6 x 11	17	112	235
9 / 4 / 13	7,5 – 40 / 11 – 60 / 15 – 87	1047	260	bis 5 x 11	18	112	235
5	15 – 70	1092	315	bis 4 x 11	20	112	235
12 / 11 / 6	12 – 40 / 17 – 60 / 20 – 70	1136	315	bis 7 x 11	17	130	240
19 / 14	7,5 – 40 / 11 – 60	1017	260	bis 6 x 14	18 – 20	130	240
20 / 21	14,5 – 40 / 20,5 – 60	1164	315	bis 7 x 12	20	140	245
30	13 – 50	1092	315				



OMS Hypodrive elevator machine



Assembling position AZHP3

The machine can be arranged with horizontal and vertical motor. In either case the oil supply for the bearings, the oil level check and the possibility of oil changing are guaranteed. That's why a version made with horizontal motor cannot be used for an arrangement with vertical motor.

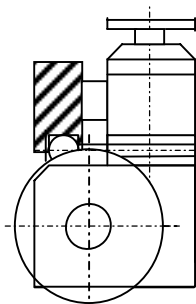
Example for Positioning and Supporting of Drive Unit

View on the traction sheave in front of the gear.

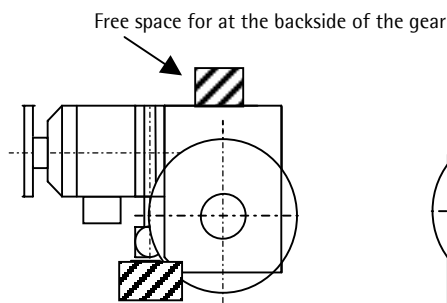
Force of rope possible in down ↓ and up ↑ direction or ↗ diagonally

The gearbox has 4 fastening holes on each of the 3 mounting sides. When applying forces from the side, additionally a support for these forces at that side is needed.

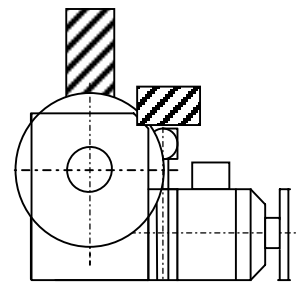
Short form for ordering : A1



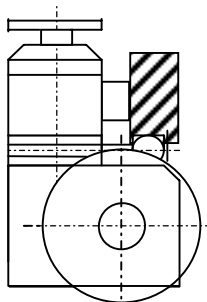
A2



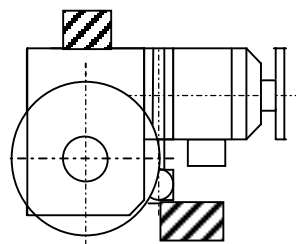
A3



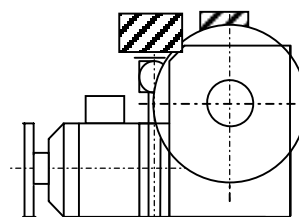
Short form for ordering : B1



B2



B3



Free space for handling
Oil fittings (cylinder)
Diameter: 150 mm
Height: 350 mm



Free space for operation
of the brake lever
Diameter: 200 mm
Height: 50 mm



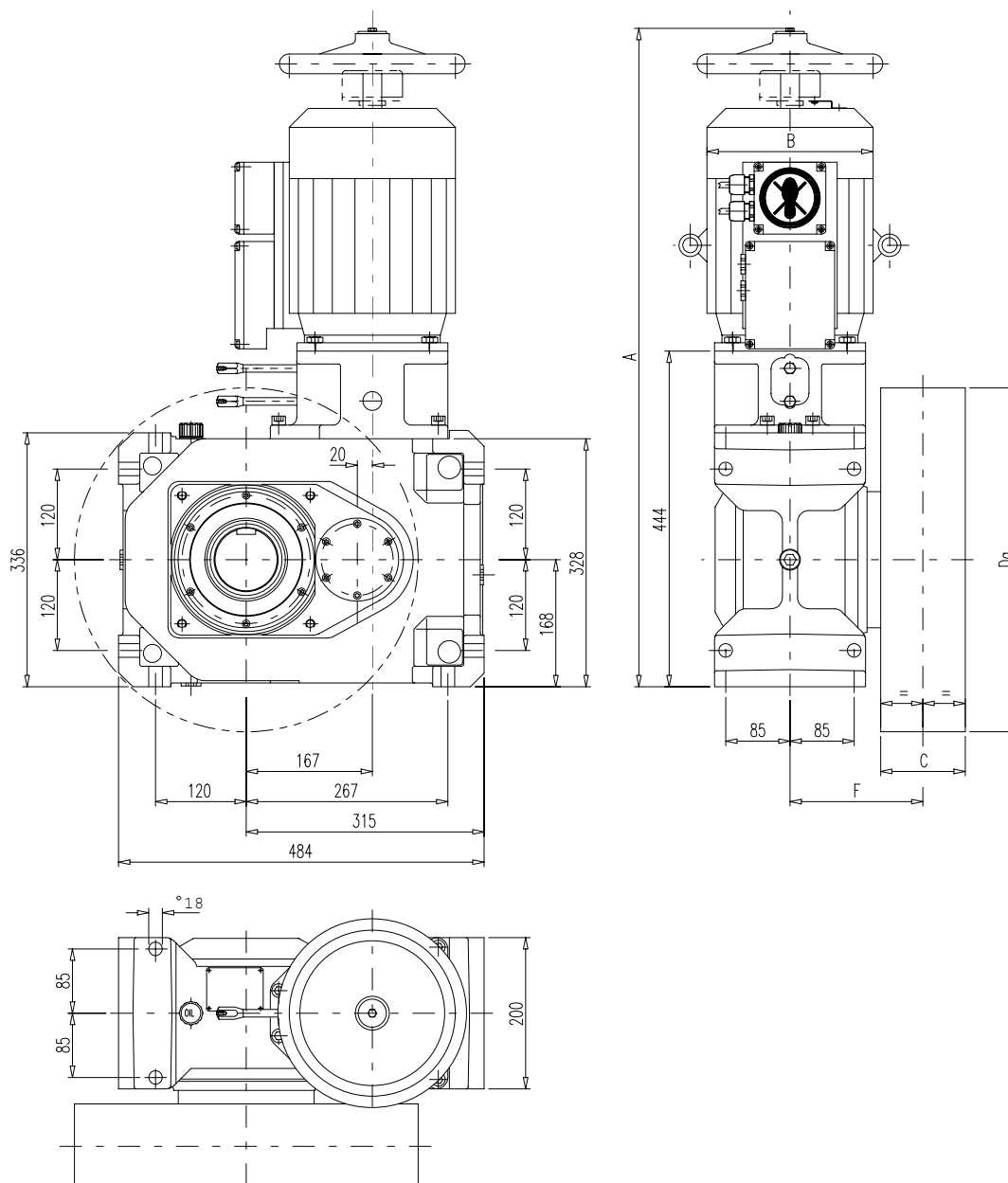
Please take notice of the operating and maintenance instruction of the AZHP3 machine.

OMS Hypodrive elevator machine

Dimension sheet AZHP2 (version A und B)



motortype oms Type	power kW – Hz	measure A mm	measure B mm	ropes	groove distance mm	measure C mm	measure F mm
1	4,2 – 60	871	220	bis 6 x 11	17	112	176
7 / 2	3,8 – 40 / 5,5 – 60	891	220	bis 5 x 11	18	112	176
10	7,5 – 60	988	220	bis 4 x 11	20	112	176
24	9,0 – 60	956	246				
22	5,5 – 50	883	246				
23	7,5 – 50	933	246				
28	5,0 – 33	933	246				

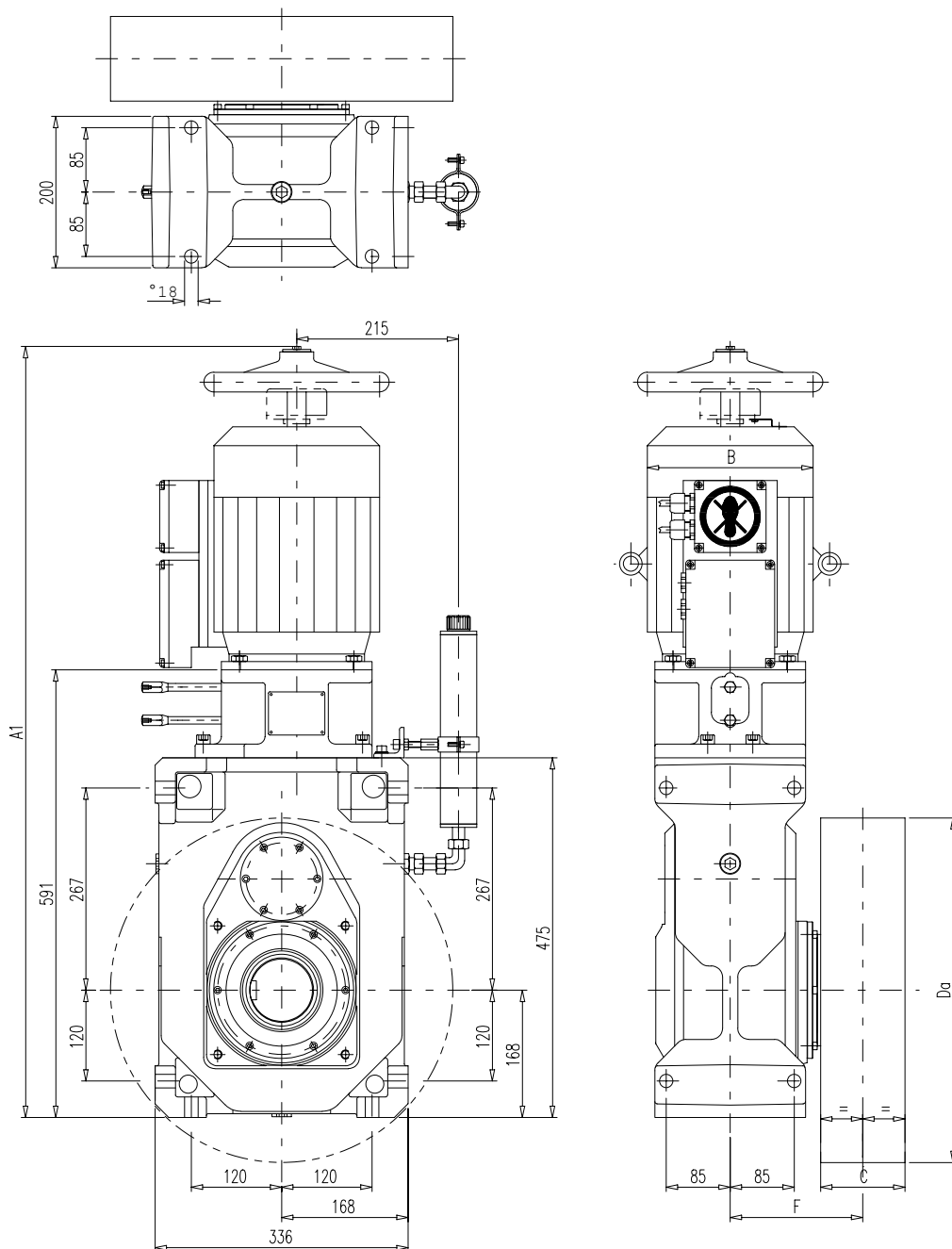


OMS Hypodrive elevator machine

Dimension sheet AZHP2 (version C)



motor type oms type	power kW – Hz	measure A1 mm	measure B mm	ropes	groove distance mm	measure C mm	measure F mm
1	4,2 – 60	1018	220	bis 6 x 11	17	112	176
7 / 2	3,8 – 40 / 5,5 – 60	1038	220	bis 5 x 11	18	112	176
10 / 15	7,5 – 60 / 8,7 – 70	1135	220	bis 4 x 11	20	112	176
24	9,0 – 60	1103	246				
22	5,5 – 50	1030	246				
23	7,5 – 50	1080	246				
28	5,0 – 33	1080	246				



OMS Hypodrive elevator machine



Assembling position AZHP2

The machine can be arranged with horizontal and vertical motor. In either case the oil supply for the bearings, the oil level check and the possibility of oil changing are guaranteed. That's why a version made with horizontal motor cannot be used for an arrangement with vertical motor.

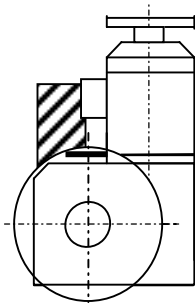
Example for Positioning and Supporting of Drive Unit

(force of rope possible in down ↓ and up ↑ direction or ↗ diagonally)

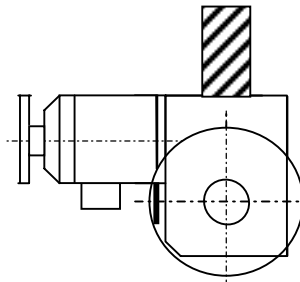
The gearbox has 4 fastening holes on each of the 3 mounting sides. When applying forces from the side, additionally a support for these forces at that side is needed.

View on the traction sheave in front of the gear.

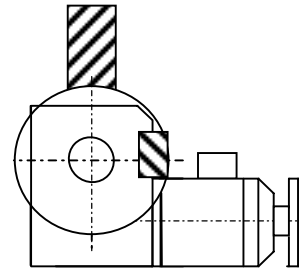
Short form for ordering : A1



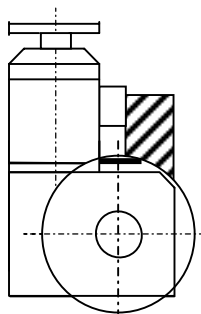
A2



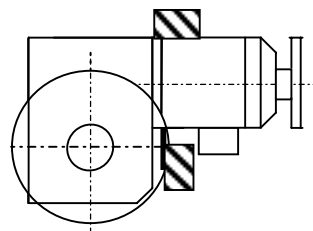
A3



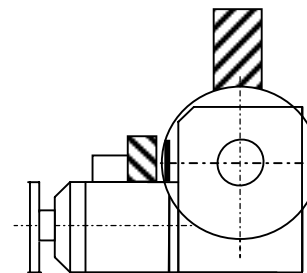
Short form for ordering : B1



B2



B3



OMS Hypodrive elevator machine



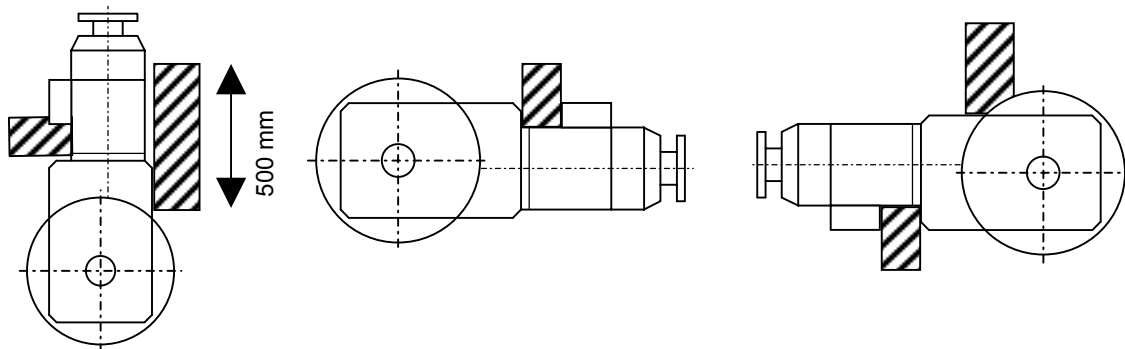
Assembling position AZHP2

View on the traction sheave in front of the gear.

Short form for ordering : C1

C2

C3



free space for handling of the oil fittings
cylinder:
diameter: 150 mm
Height: 200 mm



free space for operating the
brake lever:
diameter : 200 mm
height : 50 mm



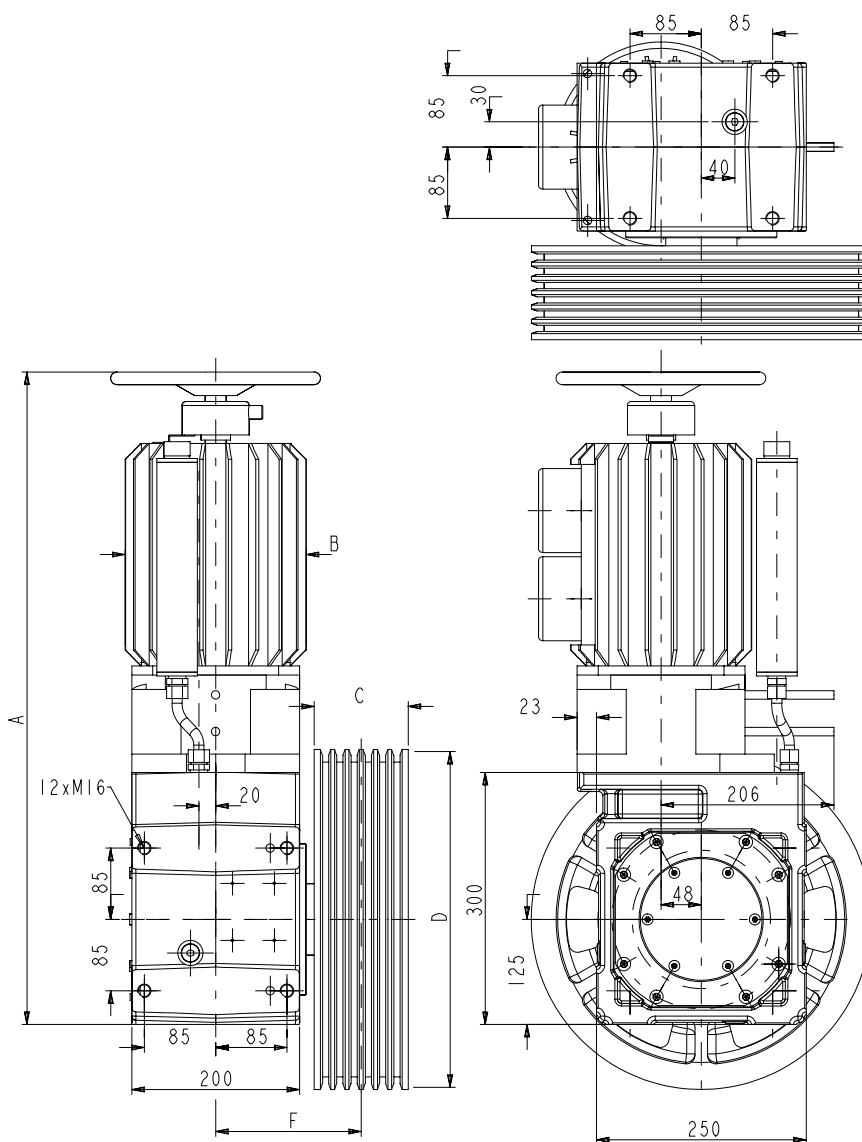
Please take notice of the operating and maintenance instruction of the AZHP2 machine.

OMS Hypodrive elevator machine

Dimension sheet AZHP1



motor type <i>oms</i> Type	power kW – Hz	measure A mm	measure B mm	ropes	groove distance mm	measure C mm	measure F mm
1	4,2 – 60	843	220	bis 6 x 11	17	112	176
7 / 2	3,8 – 40 / 5,5 – 60	863	220	bis 5 x 11	18	112	176
10 / 15	7,5 – 60 / 8,7 – 70	960	220	bis 4 x 11	20	112	176
24	9,0 – 60	928	246				
22	5,5 – 50	855	246				
23	7,5 – 50	905	246				
28	5,0 – 33	905	246				



omsHypodrive elevator machine

Assembling position AZHP1 / ordering key

The machine can be arranged with horizontal and vertical motor. In either case the oil supply for the bearings, the oil level check and the possibility of oil changing are guaranteed.

That's why a version made with horizontal motor cannot be used for an arrangement with vertical motor.

Example for Positioning and Supporting of Drive Unit

(force of rope possible in down ↓ and up ↑ direction or ↗ diagonally)

The gearbox has 4 fastening holes on each of the 3 mounting sides.

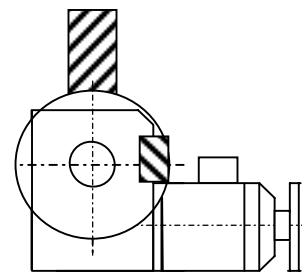
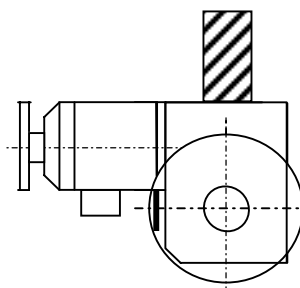
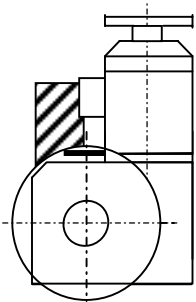
When applying forces from the side, additionally a support for these forces at that side is needed.

View to the traction sheave in front of the gear.

Short form for ordering : A1

A2

A3



free space for handling the oil fittings
cylinder:
diameter: 150 mm
height: 200 mm



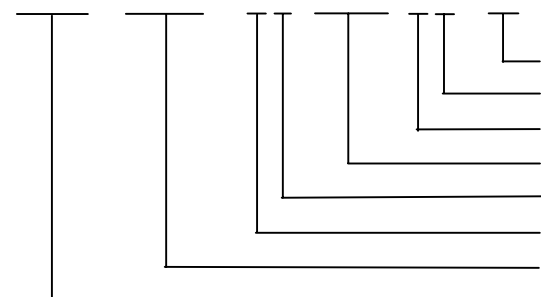
free space for operating the
brake lever
diameter : 200 mm
height: 50 mm



Attention: On all of the three standing surfaces the gear has fixing points (see dimension sheet). Please take notice of the operating and maintenance instruction of the AZHP1 machine.

Example for order key AZHP machine

AZHP3 – 37 HD – 4 S – K405 – 0 2 – B3



assembling position
brake system
key for special options
type of traction sheave
encoder (S=Sine cos, T=TTL, H=HTL)
type of motor
type of gear
series

issued: September 2005
subject to technical alterations !

OMS Hypodrive elevator machine

Questionnaire sheet

Please fill in and fax it back to:
 Distributor: +49 (0) 3303 / 50 57 58
 Distributor Benelux: +31 (0) 3844 / 32111



company:	reference number:	OMS Antriebstechnik
name:	project:	OHG
phone:	fax:	Bahnhofstraße 12
date:	planned date of delivery:	36219 Cornberg / Hess.
		Tel. 0 56 50 / 969-0

elevator data

suspension	_____ :1	car speed	_____	m/sec
load	_____ kg	rise	_____	m
car weight	_____ kg	wrapping angle	_____	°
counterweight	_____ kg	travelling cable weight	_____	kg

location of the drive

bottom under bottom beside on top above on top beside

car guide rail sliding rolling

machine not accessible (information for emergency rescue and brake test)

mechanically operated brake (by wire) electrically operated brake

incremental encoder 1024 Imp/revolution

TTL HTL sin/cos

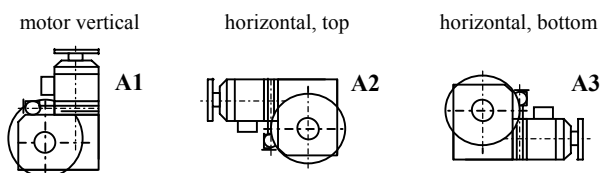
Additional information:

rope diameter _____ mm number of ropes _____ traction sheave diameter _____ mm

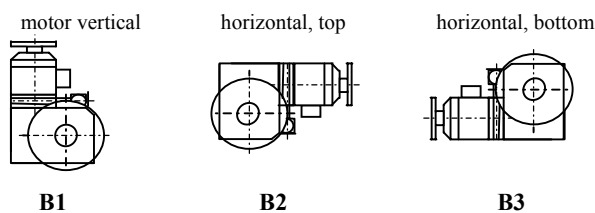
number of pulleys with same direction bending _____ with alternate bending _____

remarks: _____

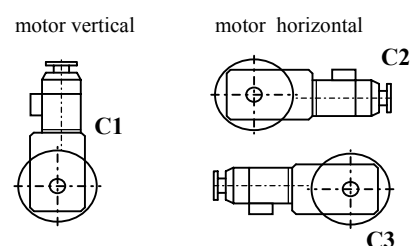
positioning of the OMS Hypodrive AZHP3 / AZHP2 / AZHP1 (please indicate) view from traction sheave side



OMS Hypodrive AZHP3, AZHP2, AZHP1



OMS Hypodrive AZHP3, AZHP2



OMS Hypodrive AZHP2

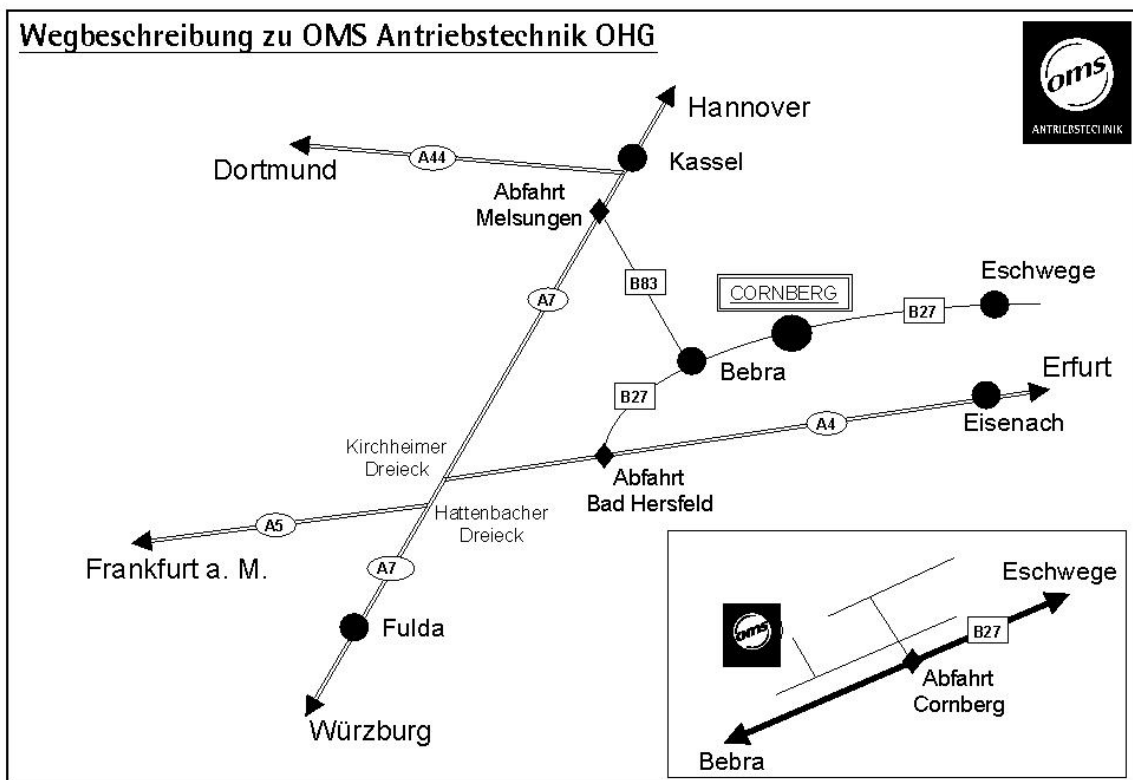
OMS Hypodrive elevator machine



Contact

OMS Antriebstechnik OHG
Bahnhofstrasse 12, D – 36219 Cornberg
Tel.: +49 (0) 5650 / 969 - 0
Fax.: +49 (0) 5650 / 969 - 100
E-mail: oms.antrieb@t-online.de
Internet: www.oms-antrieb.de

Contact:
sales: 05650/969-133



Agent:

IbA Lift Components GmbH
Lindenstrasse 39 b
D – 16556 Borgsdorf
tel.: +49 (0) 3303 505757
fax.: +49 (0) 3303 505758
E-mail: info@iba-lift.de

ATB Benelux B. V.
Tasveld 14
NL – 8271 RW IJsselmuide
tel.: +31 (0) 38 4432 110
fax.: +31 (0) 38 4432 111
E-mail: hwezenberg@atbaandrijftechniek.nl

RST Elektronik GmbH
Tannenstraße 11
D – 74229 Oedheim
tel.: +49 (0) 7136 99 12-0
fax.: +49 (0) 7136 99 12 10
Email: info@rst-elektronik.de

Contact:
Technical & sales: Hr. Abraham

Contact:
Technical & sales: Hr. Wezenberg